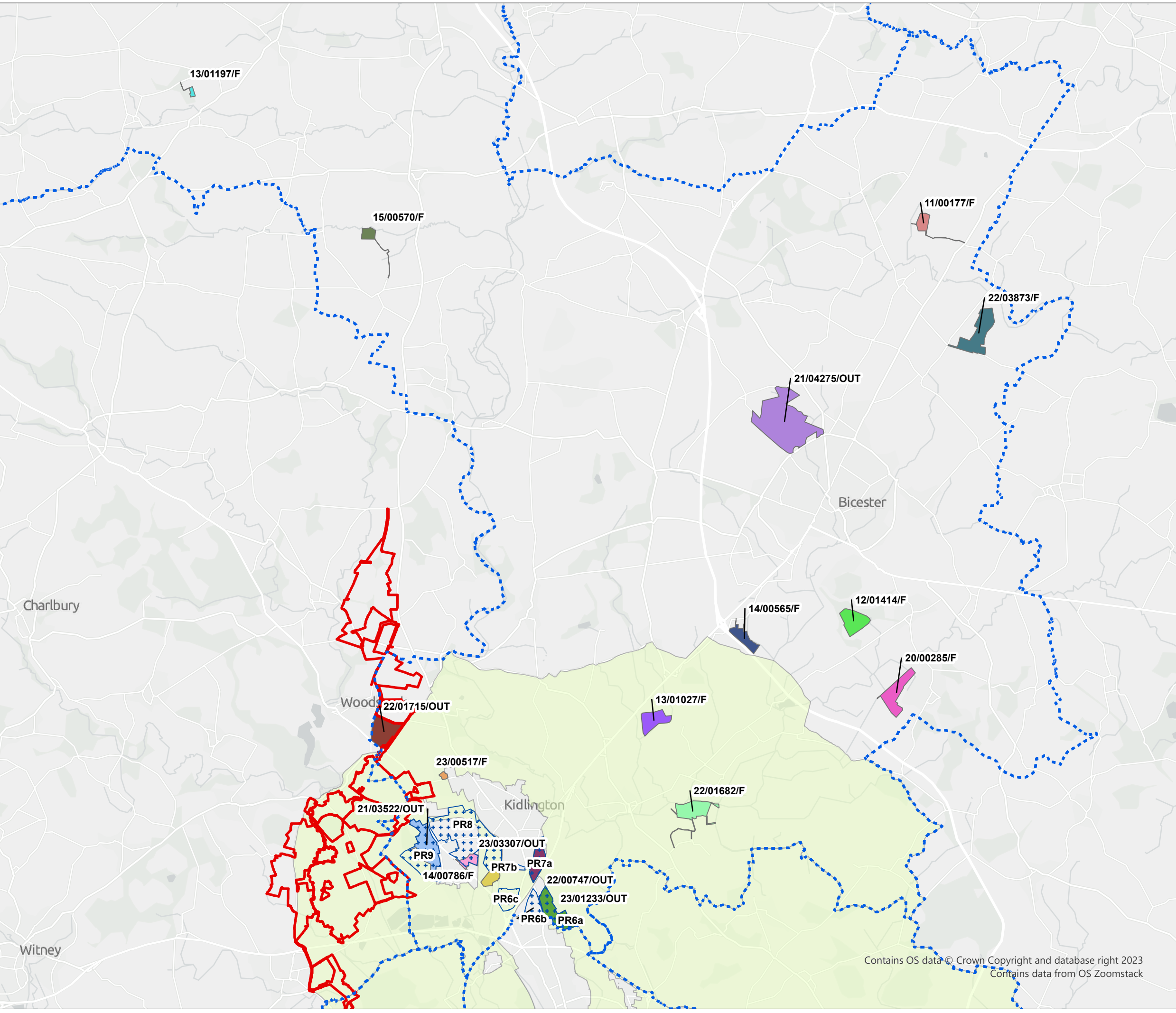


P:\eur-mpfs-02.eur.rpsgroup.com\Project\12426 Proposed DCO Scale Solar Development\860mw\Tech\Drawings\12426-0053-08.aprx



© 2024 RPS Group
 Notes
 1. This drawing has been prepared in accordance with the scope of RPS's appointment with its client and is subject to the terms and conditions of that appointment. RPS accepts no liability for any use of this document other than by its client and only for the purposes for which it was prepared and provided.
 2. If received electronically it is the recipients responsibility to print to correct scale. Only written dimensions should be used.

Legend

- Order Limits
- Local Authority Boundary
- Strategic Development Sites
- Green Belt
- 11/00177/F
- 12/01414/F
- 13/01027/F
- 13/01197/F
- 14/00565/F
- 14/00786/F
- 15/00570/F
- 20/00285/F
- 21/03522/OUT
- 21/04275/OUT
- 22/00747/OUT
- 22/01682/F
- 22/01715/OUT
- 22/03873/F
- 23/00517/F
- 23/01233/OUT
- 23/03307/OUT

Rev	Description	By	CB	Date



PHOTOVOLT
DEVELOPMENT PARTNERS



Client	PVDP		
Project	Botley West Solar Farm		
Title	Cumulative Developments - Cherwell		
Status	Drawn By	PM/Checked By	
FINAL	JM	MB	
Drawing Number	Scale @ A3	Date Created	
EN010147/APP/6.5	1:100,000	NOV 2024	
Figure Number			Rev
19.2			4

Contains OS data © Crown Copyright and database right 2023
 Contains data from OS Zoomstack

rpsgroup.com
 20 Western Avenue, Milton Park, Abingdon, Oxfordshire, OX14 4SH
 T: +44(0)1235 821 888 E: rps@rpsgroup.com